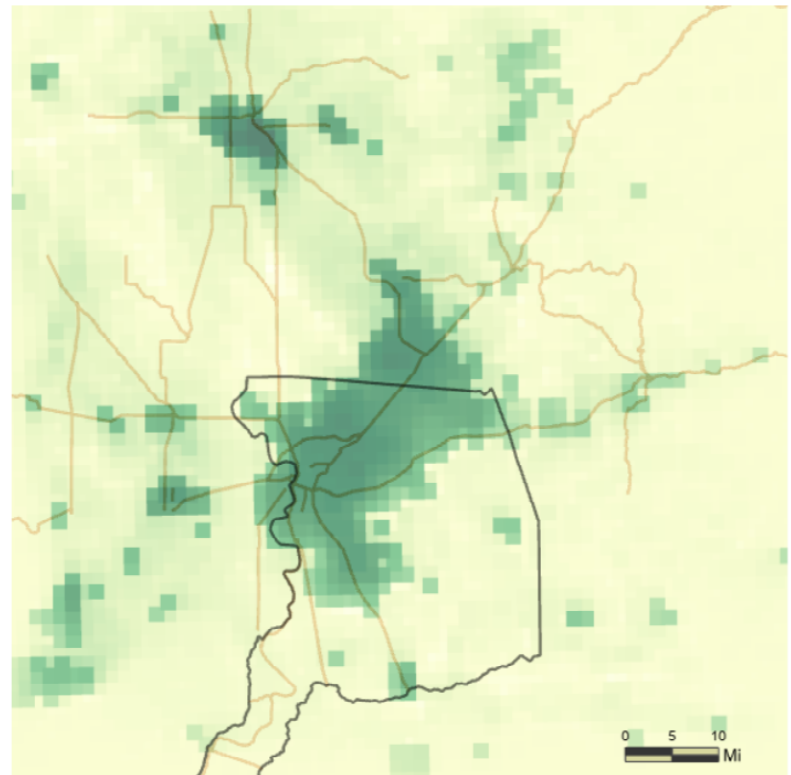
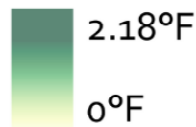


TURNING DOWN THE HEAT

Increases in tree canopy produce a uniform cooling effect through urbanized areas. Cool pavements and roofs are most effective in heavily vegetated areas.

+12% Tree canopy:
Degrees of cooling at 6AM

Due to transpiration, vegetation can cool the air both during the day and at night. According to our models, trees have the most potential to cool during morning hours and all-day averages.



Tree canopy & cool pavements:
Degrees of cooling at 3PM

Albedo measures (cool pavements and roofs) are the best way to reduce daytime heat pollution. By combining the vegetation and albedo, one can maximize the cooling for their neighborhood.

